



Pacific Northwest
NATIONAL LABORATORY

*Proudly Operated by **Battelle** Since 1965*

GETTING STARTED WITH GENII VERSION 2

BRUCE NAPIER

RAMP Training Class, Taipei, Taiwan



Presentation Outline

- ▶ **How to get help with understanding and running the code**
- ▶ **How to perform the initial installation of FRAMES and GENII**
- ▶ **How to start the FRAMES/GENII system**

How to get help with understanding and running GENII

- ▶ **A full Users' Guide and a complete Software Design Document are provided electronically with the installation package. The documentation (in Portable Document File – pdf - format) is also available on the GENII website at: <http://ramp.labworks.org/GENII/>**
- ▶ **For software technical support, please contact the software developer, Bruce Napier:**
Email: Bruce.Napier@pnnl.gov
Phone: +1 (509) 375-3896

How to perform the initial installation of FRAMES/GENII

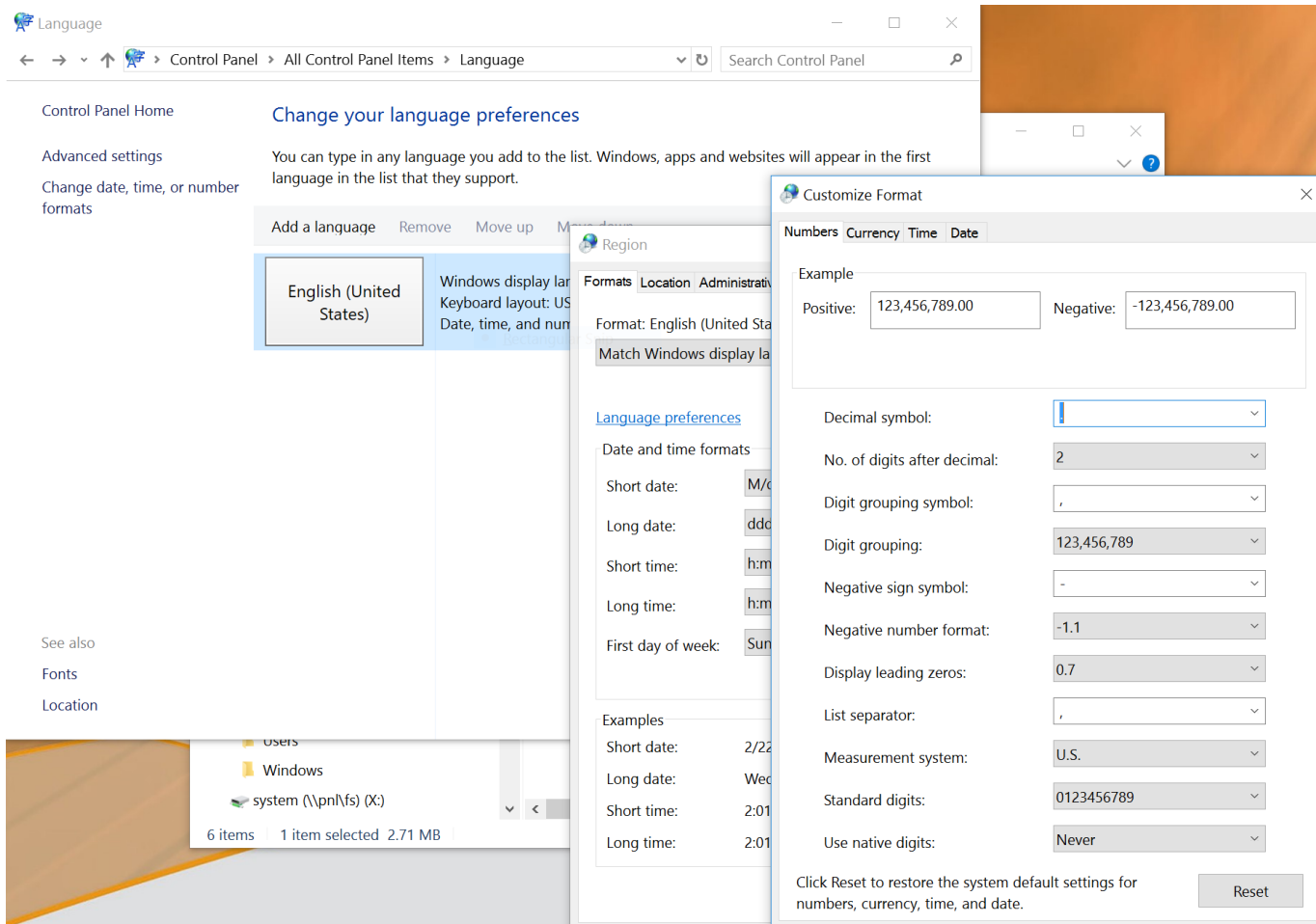
- ▶ GENII Version 2 installation package is made up of a single SETUP program. To install the package from the PNNL web site, copy the GENIISetup file onto the user's computer; it may be copied into any temporary directory. Then, run the GENIISetup routine. One way to do this is to use the Windows START – RUN commands, with \{user's directory}\GENIISetup.EXE in the box, where {user's directory} is the location of the file that has been copied.
- ▶ A series of options will be presented by the GENIISetup program. It is recommended that the user accept the FRAMES directory suggested by the program – several of the example problems assume that this directory is in use and will not execute properly if another is selected.
- ▶ In Windows XP, you can “Cancel” and ignore the MDAC warning.
- ▶ The file originally copied from the web site may be deleted upon successful installation.



Non-U.S.-English Users

- ▶ Many non-U.S.-English language settings use words other than True and False as logical indicators (e.g., Vero and Falso). The Frames user interfaces are written for English and will not recognize these other logical notations.
- ▶ In addition, the settings for some countries use notations other than the dot (".") as a decimal. The GENII routines are compiled for U.S. English and will generate errors with these conditions.
- ▶ It is recommended that the user's Control Panel > Region and Language (Windows 7) or Control Panel >Language (Windows 10) settings be consistent with "United States", either by selecting "United States" or by using the regional settings enhanced with the >Format/Additional Settings options. These may be returned to their normal settings after a Frames/GENII session is completed.

To set to U.S. English conventions





Windows 8 and Windows 10 Users

- ▶ We have had problems with Windows 8; we recommend that you obtain the free upgrade to Windows 10
- ▶ Windows 10 users with touch screens – the touch screen inputs conflict with the Visual Basic TreeView control; The following has been found to resolve the issues.
 - Access the Device Manager: In Windows 10, this is usually found using Control Panel > Administrative Tools > Computer Management > Device manager.
 - Click on Human Interactive Devices
 - Disable the capabilities for:
 - HID Compliant Touch Screen
 - HID Compliant Pen (if applicable, e.g. for Microsoft Surface computers).
- ▶ This will allow the TreeView control to function normally. The settings may be returned to normal at the completion of a Frames/GENII session.



Windows 8 and 10 Touchscreen Settings

The screenshot illustrates the steps to access Windows touchscreen settings. It shows the Control Panel window with 'Administrative Tools' selected in the left sidebar. The 'Administrative Tools' window is open, displaying a list of tools where 'Computer Management' is checked. The 'Computer Management' console is then shown, with 'Device Manager' selected in the left pane. In the right pane, under 'Human Interface Devices', 'HID-compliant touch screen' is highlighted. Red circles are drawn around 'Administrative Tools', 'Computer Management', 'Device Manager', and 'HID-compliant touch screen' to indicate the navigation path.

Control Panel > Administrative Tools

Computer Management

Device Manager

HID-compliant touch screen



How to start the FRAMES/GENII system

- ▶ Start the FRAMES/GENII system using one of the following methods:
 - Double click on the “Launch FRAMES” desktop icon or
 - Use the Windows command sequence Start\Programs\FRAMES\FRAMES or
 - From the \FRAMES directory, double click to run the FUI.EXE file.